



## Fast Sealers: Assembly Instructions

**FAST AG – SERVICE**

Toll free: 800-772-9279

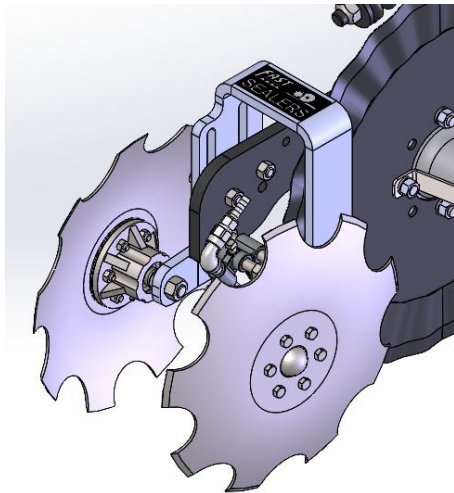
Website: [www.fastagsolutions.com/resources](http://www.fastagsolutions.com/resources)

E-mail: [cwinter@fastagsolutions.com](mailto:cwinter@fastagsolutions.com)

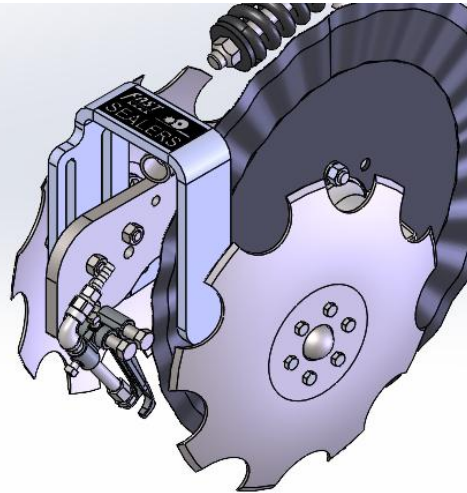
[ahinkeldey@fastagsolutions.com](mailto:ahinkeldey@fastagsolutions.com)

**Step 1:** Attach applicator to tractor, park on solid, level ground, and unfold and lower the toolbar to a comfortable working height.

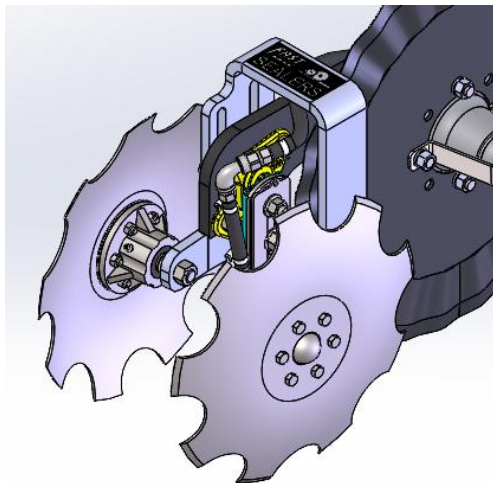
**Step 2:** Check layout and determine which rows need a regular bracket and which need a “special” bracket. As shown below, the regular bracket offsets the sealer blades rearwards, and the special bracket shifts them forwards to avoid interferences in tight spaces.



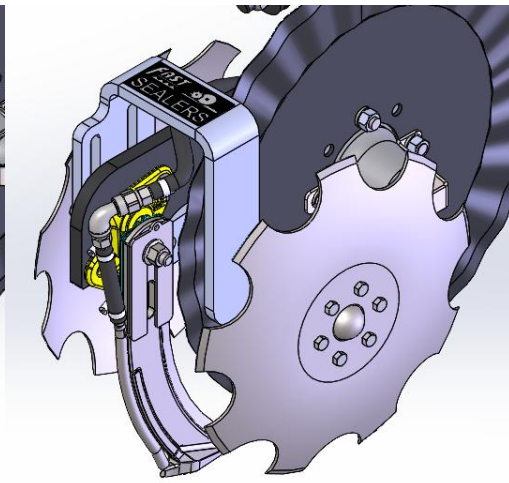
**Injection Regular Bracket**



**Injection Special Bracket**



**Knives Regular Bracket**

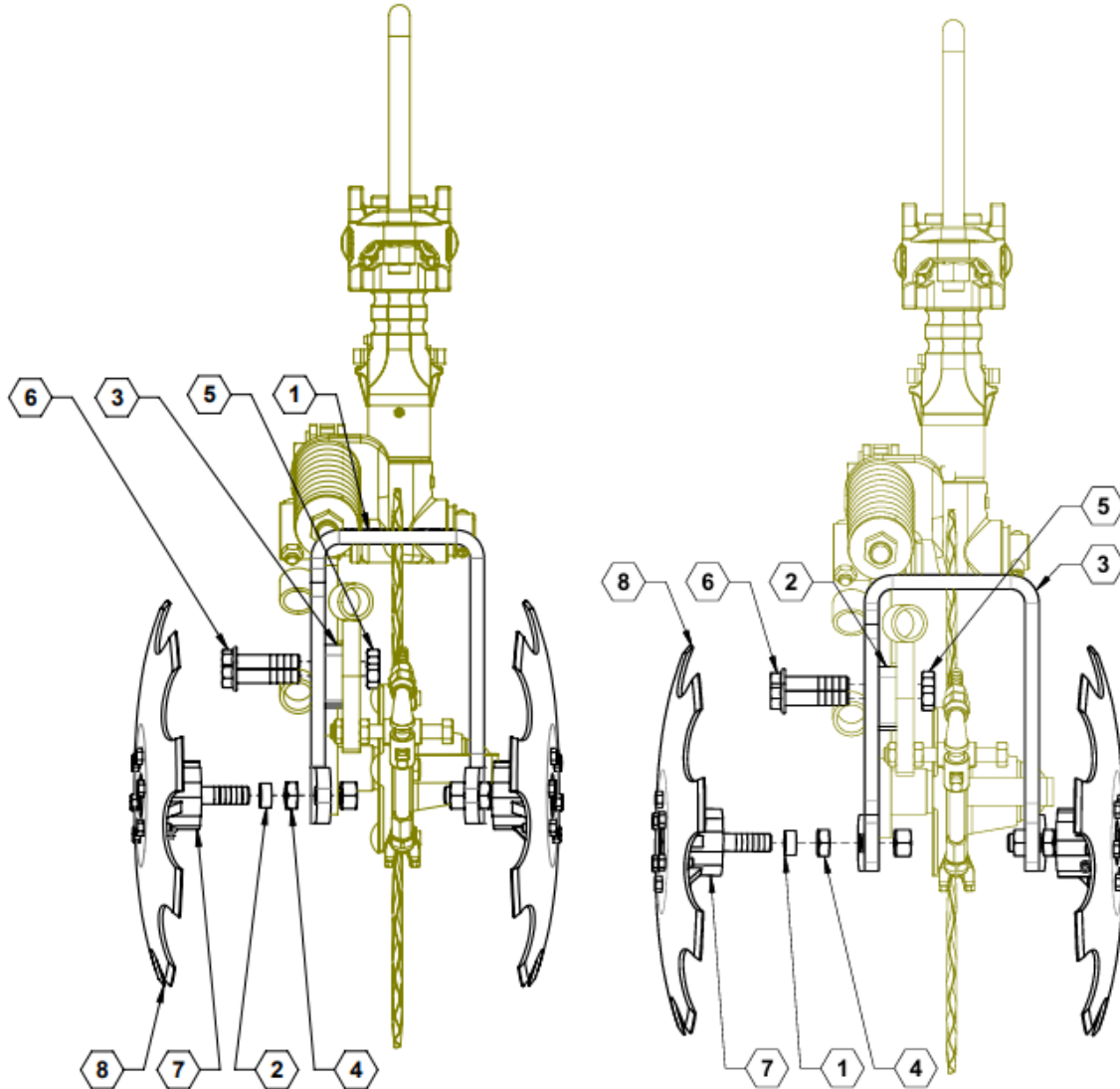


**Knives Special Bracket**



## Fast Sealers: Assembly Instructions

**Step 3:** Identify hardware. Hardware is the same for both “regular” and “special” brackets.



NO.	PART	QTY.	DESCRIPTION
1	37941	1	PLATE, U-BRACKET
2	37942	2	SPACER, HUB
3	37943	1	PLATE, SPACER
4	590908	1	HARDWARE KIT, SEALER HUBS AND SPINDLES
5	596239M	2	NUT, CENTERLOCK, 1/2-13 MAGNI
6	596872M	2	1/2-13 X 2-1/4 GR5 FLANGE BOLT
7	730152	2	ASSY, GROVE 63204 HUB
8	750115	2	CONCAVE DISC, 14" NOTCHED
9	800399	1	DECAL, FAST SEALERS

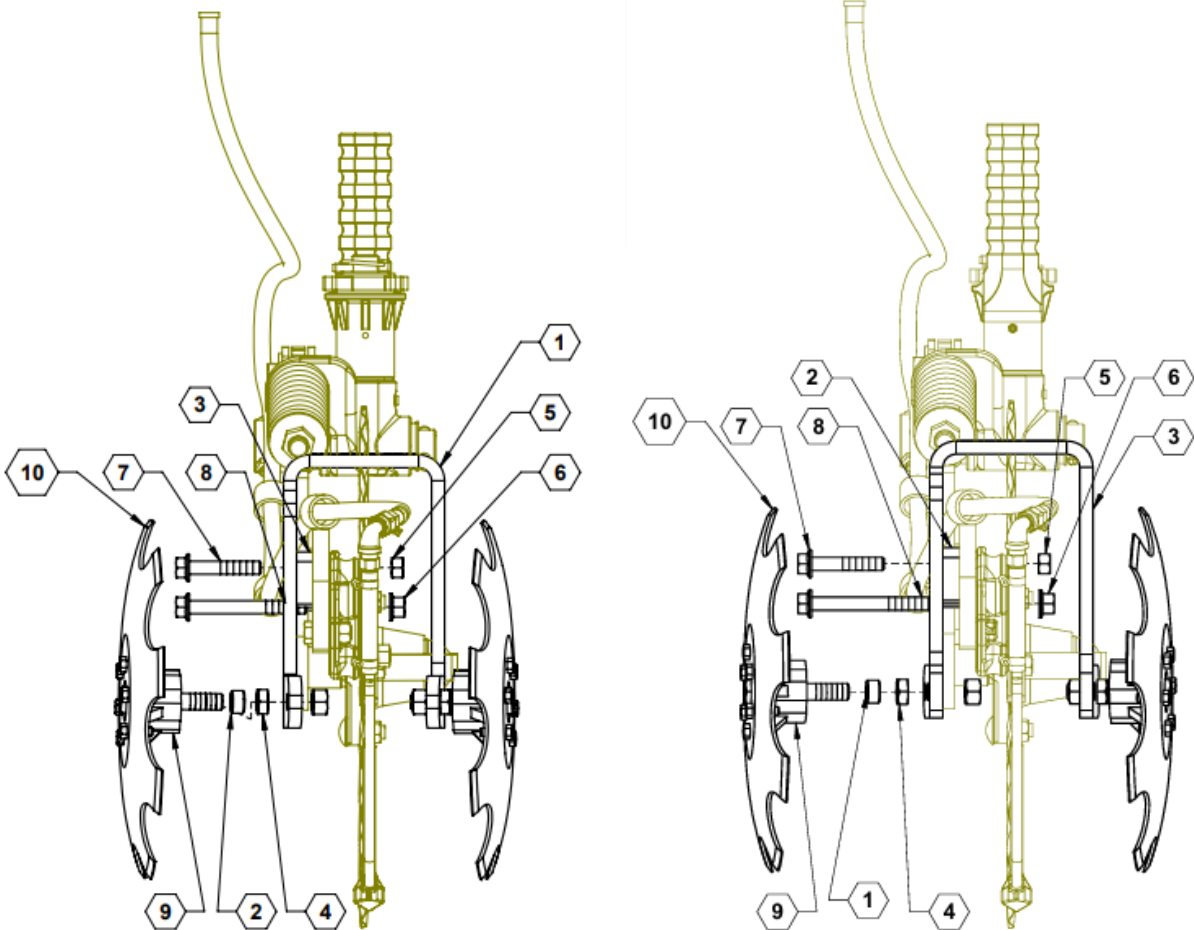
**Hardware for Injection**

NO.	PART	QTY.	DESCRIPTION
1	37942	2	SPACER, HUB
2	37943	1	PLATE, SPACER
3	38181	1	PLATE, FORWARD U-BRACKET
4	590908	1	HARDWARE KIT, SEALER HUBS AND SPINDLES
5	596239M	2	NUT, CENTERLOCK, 1/2-13 MAGNI
6	596872M	2	1/2-13 X 2-1/4 GR5 FLANGE BOLT
7	730152	2	ASSY, GROVE 63204 HUB
8	750115	2	CONCAVE DISC, 14" NOTCHED
9	800399	1	DECAL, FAST SEALERS

**Hardware for Special Bracket Injection**



## Fast Sealers: Assembly Instructions



NO.	PART	QTY.	DESCRIPTION	NO.	PART	QTY.	DESCRIPTION
1	37941	1	PLATE, U-BRACKET	1	37942	2	SPACER, HUB
2	37942	2	SPACER, HUB	2	37943	1	PLATE, SPACER
3	37943	1	PLATE, SPACER	3	38181	1	PLATE, FORWARD U-BRACKET
4	590908	1	HARDWARE KIT, SEALER HUBS AND SPINDLES	4	590908	1	HARDWARE KIT, SEALER HUBS AND SPINDLES
5	596239M	1	NUT, CENTERLOCK, 1/2-13 MAGNI	5	596239M	1	NUT, CENTERLOCK, 1/2-13 MAGNI
6	596820M	1	LOCKNUT, FLANGED 1/2-13 G8 MAGNI	6	596820M	1	LOCKNUT, FLANGED 1/2-13 G8 MAGNI
7	596873M	1	1/2-13 X 2-3/4 GR5 FLANGE BOLT	7	596873M	1	1/2-13 X 2-3/4 GR5 FLANGE BOLT
8	596874M	1	1/2-13 X 4-1/2 GR5 FLANGE BOLT	8	596874M	1	1/2-13 X 4-1/2 GR5 FLANGE BOLT
9	730152	2	ASSY, GROVE 63204 HUB	9	730152	2	ASSY, GROVE 63204 HUB
10	750115	2	CONCAVE DISC, 14" NOTCHED	10	750115	2	CONCAVE DISC, 14" NOTCHED
11	800399	1	DECAL, FAST SEALERS	11	800399	1	DECAL, FAST SEALERS

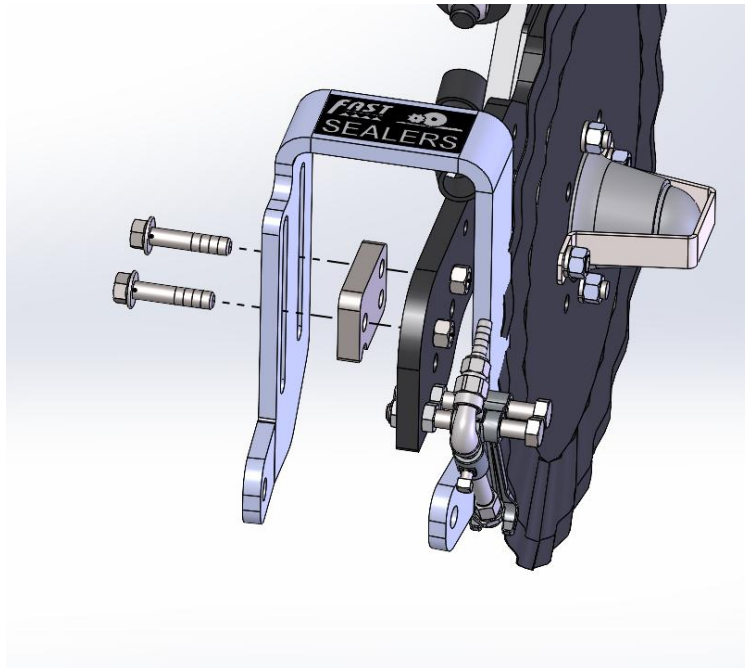
Hardware for Knives

Hardware for Special Bracket Knives

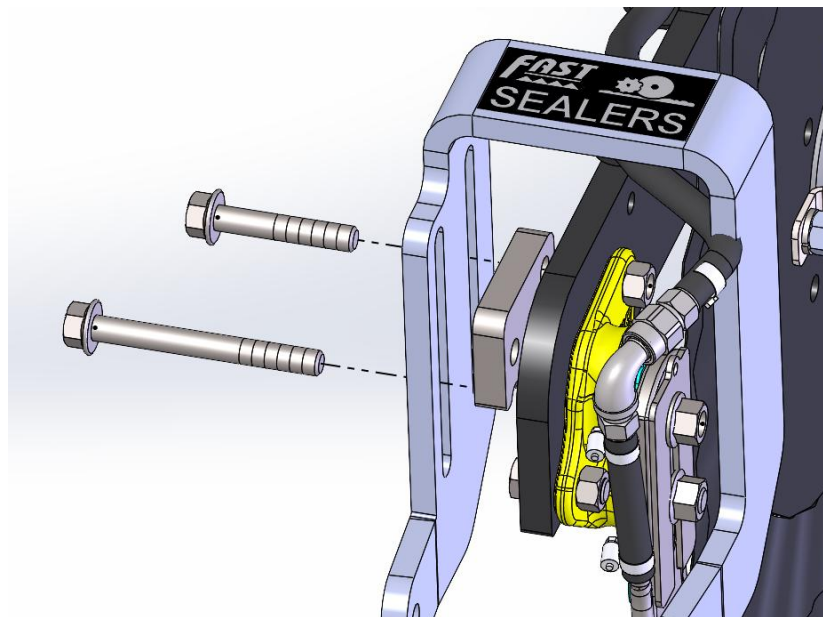


## Fast Sealers: Assembly Instructions

**Step 4:** Bolt bracket to coultter arm loosely. If your coultters have knives, you will need to replace existing bolts as shown below. Make sure spacer plate is between the U-bracket and the coultter arm. See **Step 3** for hardware questions.



**\*\* Both bolts are same length for injection \*\***

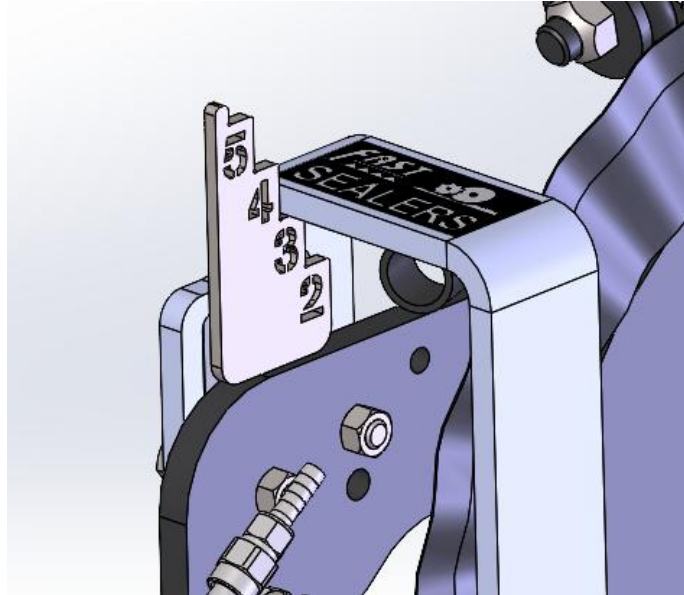


**\*\* Longer bolt goes thru knife with flange nut \*\***

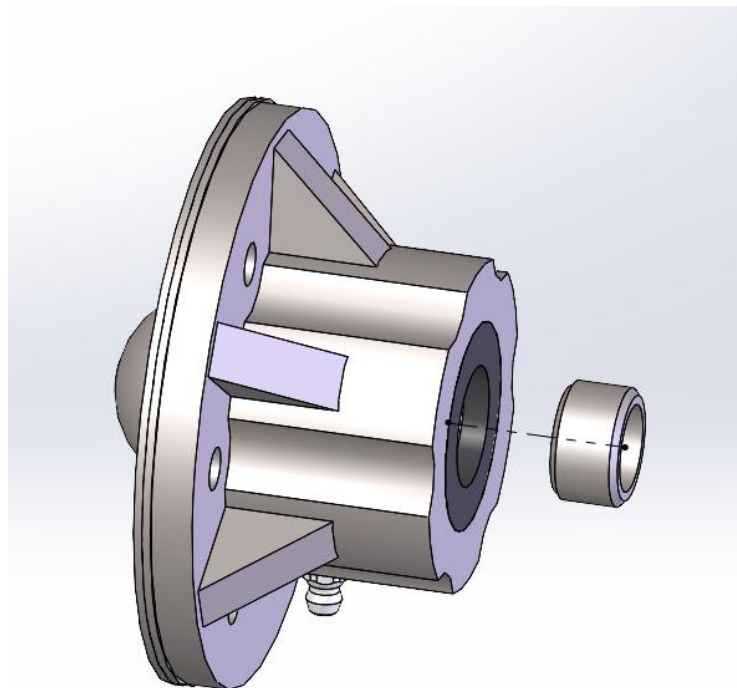


## Fast Sealers: Assembly Instructions

**Step 5:** Set the height of the bracket to the desired height. The number on the plate correspond to the depth you run your couler at. Rest the plate on the couler arm and then drop the bracket onto your desired ledge. The image below shows how to set the depth if you typically run your coulters at 3" of depth. Ensure the bracket is square with your couler arm and tighten bracket bolts fully.



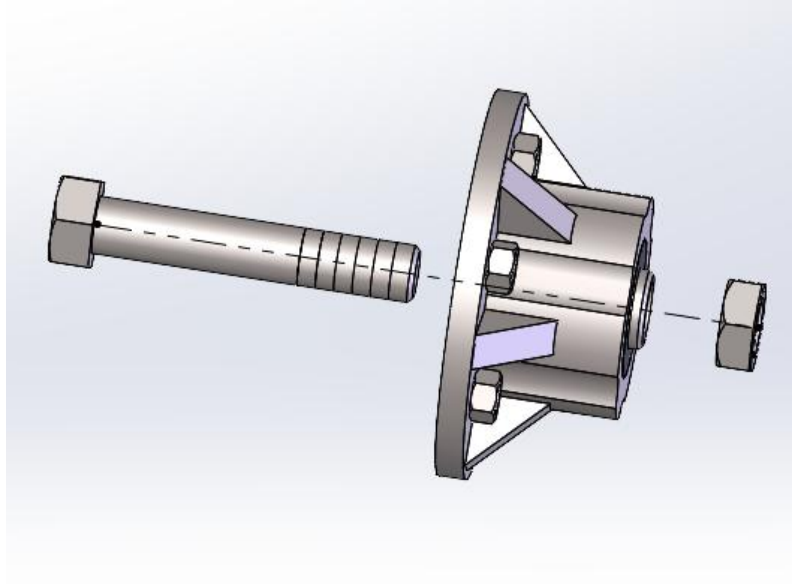
**Step 6:** Insert bushing into hub as shown below.



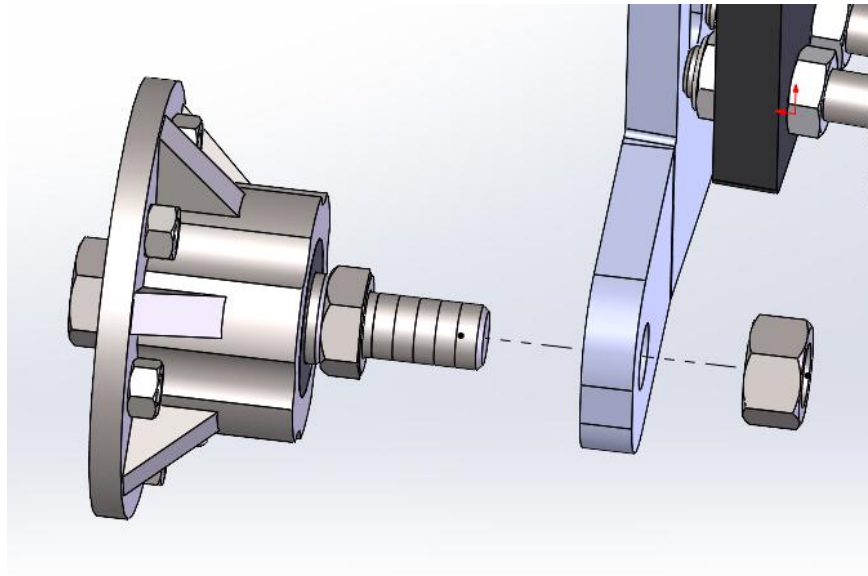


## Fast Sealers: Assembly Instructions

**Step 7:** Insert 5/8" bolt through hub and tighten jam nut against the bushing. The jam nut should only be wrench tight. **DO NOT** use an impact to tighten because overtightening will cause damage to the bearings.



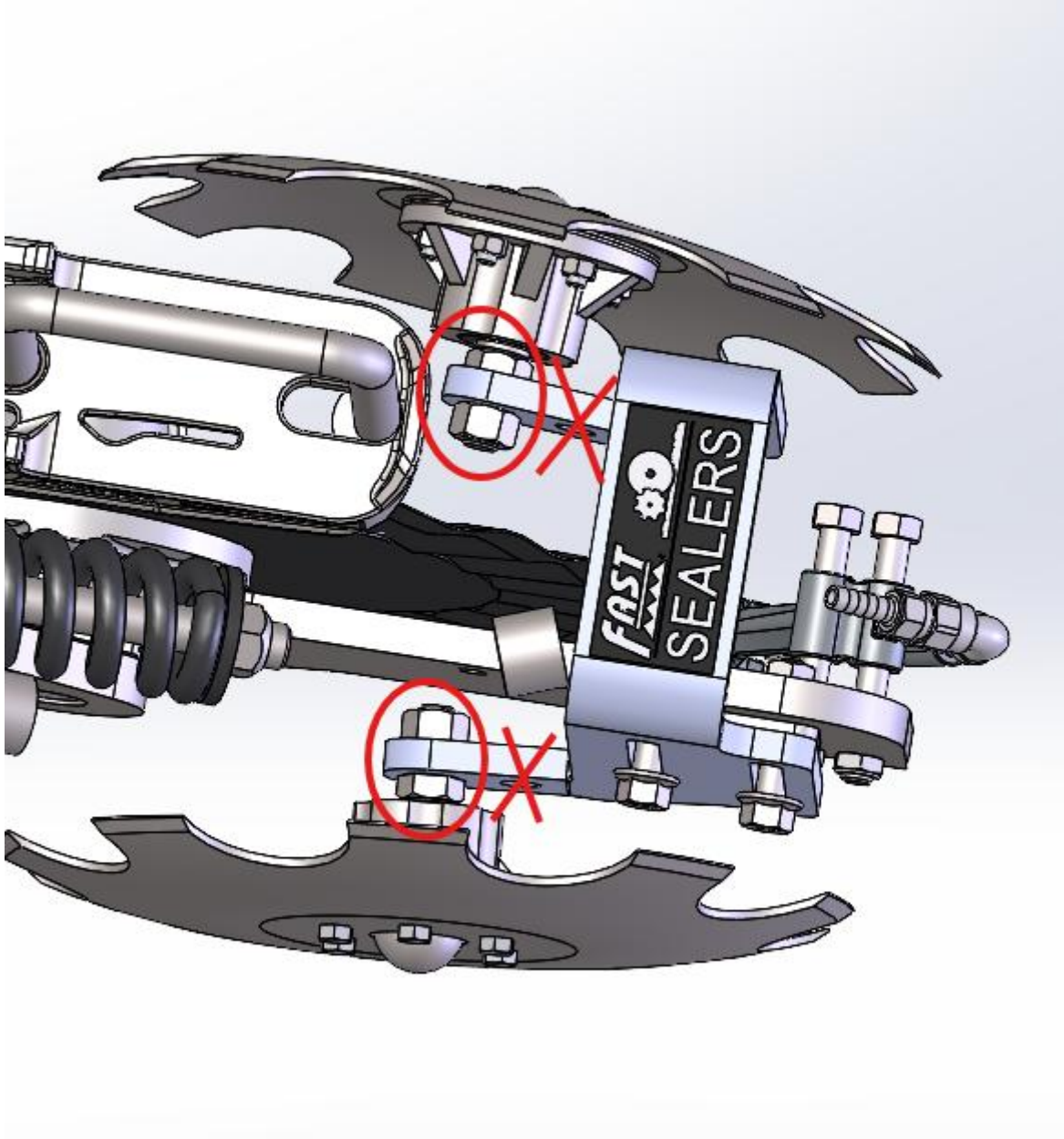
**Step 8:** Bolt your hub to the bracket. Tighten the centerlock nut using the head of the bolt. **DO NOT** use the jam nut to clamp against the centerlock nut, this nut should be tight to the bushing in the previous step.





## Fast Sealers: Assembly Instructions

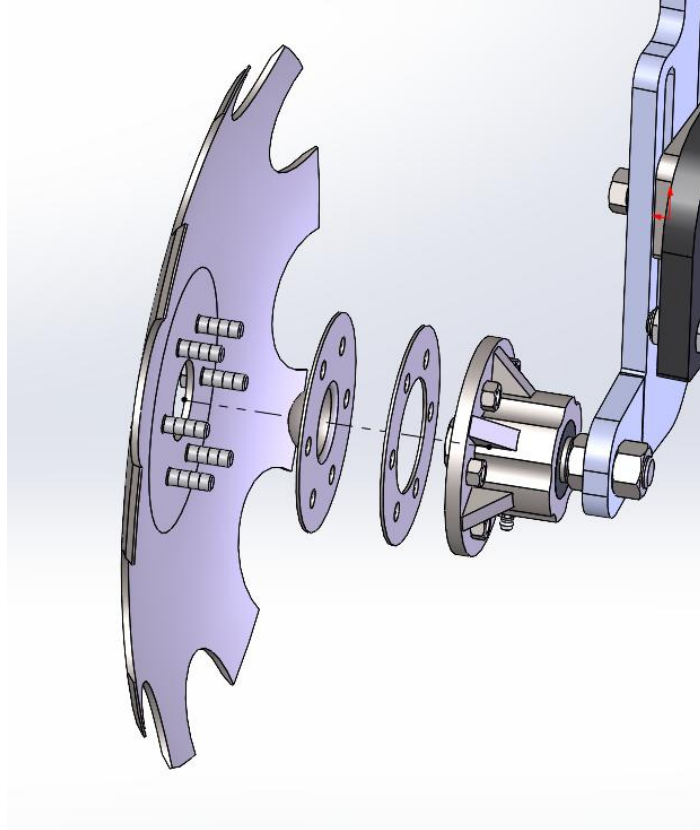
**Step 8 continued:** Sealers should always be installed in further “forward” hole on the special bracket as shown below.



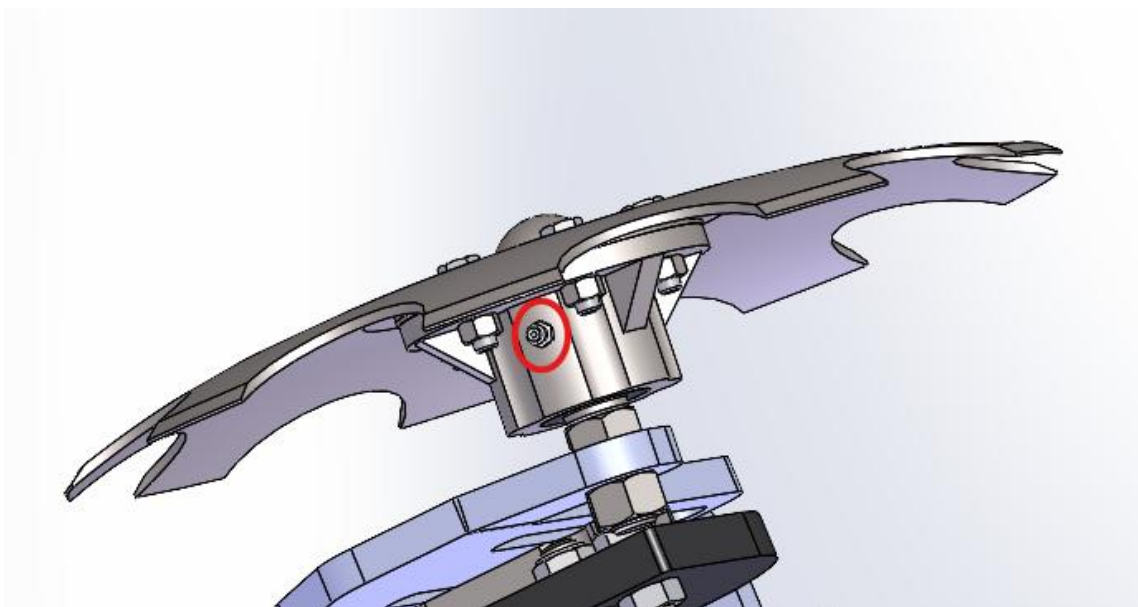


## Fast Sealers: Assembly Instructions

**Step 9:** Bolt gasket, dust cap, and blade to the hub. These bolts should be torqued from 150 to 200 in-lbs (12.5 to 16.5 ft-lbs). Be sure to avoid over tightening or bolts may break.



**Step 10:** Grease hubs.





# Fast Sealers: Assembly Instructions

## Fully Assembled Views

